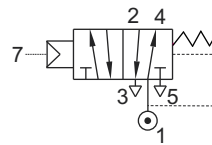


SERIES : 52S

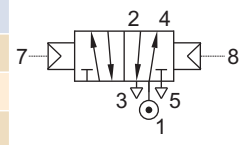
5/2 AIR OPERATED, SPRING/ AIR RETURN VALVE

TYPE	PRESSURE

TYPE	PRESSURE
53440	0 - 16 bar



TYPE	PRESSURE
58440	0 - 16 bar



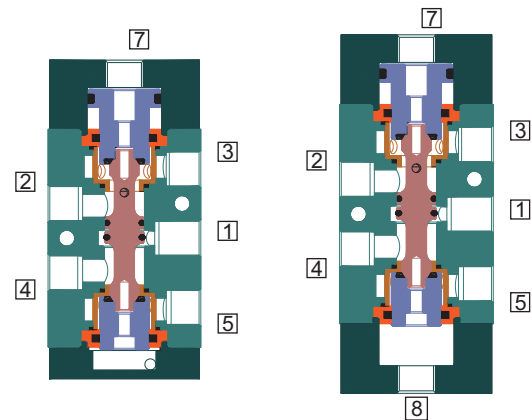
FEATURES

- Highly reliable rugged construction
- Positive Sealing snap operation with poppet design
- Bubble tight shut off
- Vibration resistance up to 9g
- Suitable for high speed cycling
- Speed up to 1200 cycles/ min
- Life >10 million cycles
- Larger exhaust for quick operation of the cylinder/ actuator
- Mounts in any position
- 53440 & 58440 Valve is Air failure to retain
- 53440S Valve is Air failure to retain (Air & Spring assisted for returning)



WETTED PARTS

Code	※	B1	B2	B5
Body	Anodized Aluminium	Anodized Aluminium	Brass	SS 316
Internals	Aluminium, Brass	SS 316	Brass	SS 316
Spring	SS 302			
Fasteners	SS 304			
Seat, Seals	NBR, Viton, F.Silicon			



AMBIENT AND FLUID TEMPERATURE

-30 °C to 75 °C

SPECIAL VERSION AND SUFFIX

Suffix : (Valve) OX, AM,

MEDIA

Air, Inert Gases, Oil, Water

APPLICATION

Double Acting actuator/ cylinder operation

PORT CONNECTION

INLET	OUTLET	OUTLET	EXHAUST	EXHAUST	EXTERNAL PILOT INLET	VALVE TYPE
1	2	4	3	5	7	53440
1	2	4	3	5	7 and 8	58440

Contact Rotex for

- Any other ambient, fluid temperature, media and application



The pilot pressure should be minimum 2 bar or ≥ main Fluid pressure whichever is higher

Η πιεση πιλωτου ειναι ελαττωση 2 bar η μεγαλυτερη απο την πιεση υδραυλικου υγρου οπου ειναι η πιεση υδραυλικου υγρου

SPARES

(Refer page 25 for ordering code)

SPARE KIT	CODE
Seal Kit : Oring Set	98
Repair Kit : Oring Set, Fastener, Springs	99

