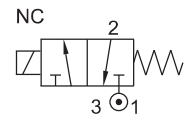


3/2 DIRECT ACTING NC GENERAL PURPOSE SOLENOID VALVE

TYPE	PRESSURE

TYPE	PRESSURE

TYPE	PRESSURE
302A	0 - 10 bar

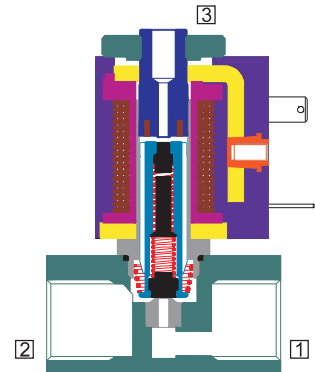


FEATURES

- Bubble tight shut off
- Mounts in any position
- Vibration resistance up to 5g
- Suitable for high speed cycling
- Speed up to 1000 cycles/ min
- Life >10 million cycles

WETTED PARTS

Code	※	B2	B5
Body	Aluminium	Brass	SS 316
Internals	Aluminium	Brass	SS 316
Guide Assembly	Brass		
Shadow-Ring	Copper/ Silver/ None		
Plunger, Insert	SS 430		
Spring	SS 302		
Seat, Seals	NBR, Viton, EPDM		



AMBIENT AND FLUID TEMPERATURE

-20 °C to 70 °C

SPECIAL VERSION AND SUFFIX

Suffix : (Valve) OX, WO
Special version : (Solenoid)

MEDIA

Air, Inert Gases

APPLICATION

Single acting actuator/ Cylinder, control valve actuation.

PORT CONNECTION

FUNCTION	INLET	OUTLET	EXHAUST
NC	1	2	3

SPARES

(Refer page 25 for ordering code)

SPARE KIT	CODE
Seal Kit : Oring Set and Plunger Assembly	98
Repair Kit : Oring Set, Plunger Assembly, Springs	99
Solenoid Kit : Solenoid, Gasket and Nut	34

APPROVAL

(※ applied for)

Approval	Nema 4X	IP67	Ex d IIC T4 or T5 or T6 IP66	Ex ia IIC T6 IP67	DGMS	CCOE
		✓				
		✓				

Contact Rotex for

- Any other ambient, fluid temperature, media and application



Recommended for Indoor Installation.

3/2 DIRECT ACTING GENERAL PURPOSE SOLENOID VALVE

SPECIFICATION

PORT CONNECTION			PRE-SSURE bar	ORIFICE (mm)	FLOW FACTOR kv (LPM OF WATER @ 1 bar ΔP)	VALVE TYPE	PILOT PRESSURE	BODY MATERIAL AND INTERNALS				SEALS				MANUAL OVERRIDE			SOLENOID ENCLOSURE		SUFFIX	POWER VA		CONSTRUCTION REFERENCE NUMBER				
SIZE	BSP(F)	NPT(F)	MINIMUM					MAXIMUM	ALUMINIUM	ALUMINIUM + SS	BRASS (STD. PORT NPT)	SS 316/CF8M (STD. PORT NPT)	NBR	Viton	EPDM	HYTREL	PTFE	NIL	STAYPUT CUM MOMENTARY	MOMENTARY		FLYING LEAD	PLUG IN, IP67		SQ. PLUG IN, IP67	TERMINAL BOX IP67	FPJB Ex d IIC, T4 OR T6, IP67	LARGE ENCLOSURE

3/2 NORMALLY CLOSED

1/4"	2G	2R	0	10	1.5	1.2	302A	×	B2	B5	×	S2		×				22				8			12	6	5	318
------	----	----	---	----	-----	-----	------	---	----	----	---	----	--	---	--	--	--	----	--	--	--	---	--	--	----	---	---	-----

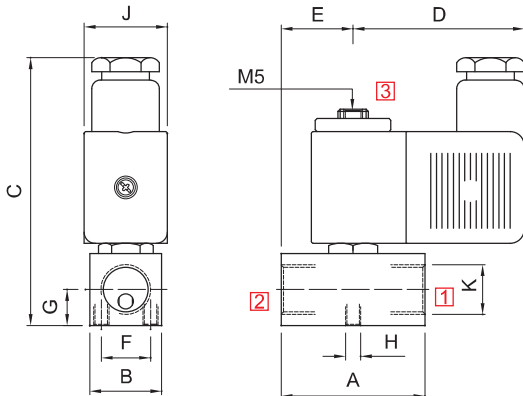
× = Do not specify when opted for
 ✓ = Options available

ORDERING CODE AND EXAMPLE VALVE + SOLENOID

TYPE - PORT CONNECTION - SEAL +
 VOLTAGE - CURRENT - SOLENOID ENCLOSURE
 e.g. 302A-1.5-2R+I-24V-DC-22

DIMENSIONS

All Dimensions are in mm



PLUG IN SOLENOID TYPE 22

K (PORT SIZE)	A	B	C	D	E	F	G	H	J	CONST. REF
VALVE TYPE : 302A										
1/4"	38	19	70	45	19	13	9.5	M4	22	318