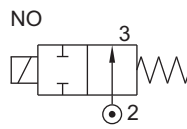


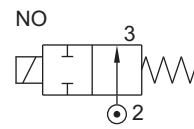
1/2 NORMALLY OPEN SOLENOID VALVE FOR TERMINAL/ GANTARY AUTOMATION

TYPE	PRESSURE

TYPE	PRESSURE



TYPE	PRESSURE
3275I	0 - 21 bar



FEATURES

- Bubble tight shut off
- Mounts in any position
- Vibration resistance up to 9g
- Suitable for high speed cycling
- Speed up to 800 cycles/ min
- Life >15 million cycles



WETTED PARTS

Body	SS 316	Plunger, Insert	SS 430
Internals	SS 316	Seat, Seals	Viton
Guide Assembly	SS 304	Fastener	SS 304
Spring	SS 302	Shadow ring	Copper

SPECIFICATION

Valve Type	2/2 Direct Acting Normally Open	2/2 Direct Acting Normally Open
Body Material	SS316	SS 316
Orifice	2.2	4
Port Connection	1/4" NPT(F)	1/4" NPT(F)
Media	Petrol/ Diesel/ HSD SKO/ LPG	Petrol/ Diesel/ HSD SKO/ LPG
Pressure	0 - 20 bar	0 - 8 bar
Seal	Viton	Viton
Coil Voltage, Current	230V AC	230V AC
Enclosure	Explosion Proof Ex d	Explosion Proof Ex d
Application	Petrol/ Diesel/ LPG/ SKO Dispensing	Petrol/ Diesel/ LPG/ SKO Dispensing
Model	-	-

OPTION

Body Material	-	-
Orifice	-	-
Connection	-	-
Media	-	-
Seal	-	-
Voltage	Any	Any
Current	Any	Any
Enclosure	Weather Proof	Weather Proof
Solenoid Size	18	18
Extended	-	-
Application	-	-

AMBIENT TEMPERATURE

-20°C to 70°C

FLUID TEMPERATURE

-20°C to 70°C

PORT CONNECTION

FUNCTION	INLET	OUTLET
3275	2	3
3205	2	3
3275I	2	3

Contact Rotex for any other ambient, fluid temperature, media and application.



For Valve type 3275I operated with AC voltage select in built full rectified solenoid with FR option

2/2 NORMALLY OPEN SOLENOID VALVE FOR TERMINAL/ GANTARY AUTOMATION

SPECIFICATION

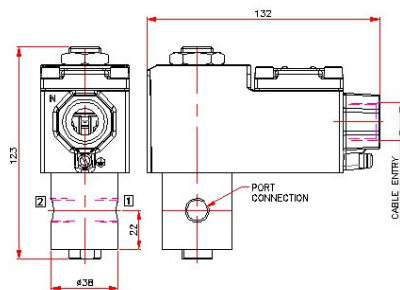
PORT CONNECTION			PRE-SSURE bar		ORIFICE (mm)	FLOW FACTOR kv (LPM OF WATER @ 1 bar ΔP)	VALVE TYPE	PILOT PRESSURE	BODY MATERIAL AND INTERNALS					SEALS					MANUAL OVERRIDE				SOLENOID ENCLOSURE			SUFFIX		POWER VA		CONSTRUCTION REFERENCE NUMBER							
SIZE	BSP(F)	NPT(F)	MINIMUM	MAXIMUM					ALUMINIUM	ALUMINIUM + SS	BRASS (STD. PORT NPT)	SS 316 (STD. PORT NPT)	NBR	Viton	EPDM	HYTREL	PTFE	NIL	STAYPUT CUM MOMENTARY	FLYING LEAD	PLUG IN, IP67	SQ. PLUG IN, IP67	TERMINAL BOX IP67	EXPLOSION PROOF IIC, IP67	IS WITH CIRCUIT EX Ia IIC T6, IP67	SOLENOID SIZE	OXYGEN	AMMONIA	AC INRUSH		AC HOLDING	DC					
1/4"	2G	2R	0	8	4	7	3275I							B5	S2G		S8																				
			0	15	3.5	4	3275I								B5	S2G		S8																			
			0	18	3	4	3275I								B5	S2G		S8																			
			0	20	2.2	2.5	3275I								B5	S2G		S8																			

Cable Entry	E	Ex emb
M20 x 1.5	FJ	ī ī T Ū ī ī ŠVT Ū
1/2" NPT	Fī	ī ī b Ū ī ī Švp Ū

* = Do not specify when opted for. Refer Page # 22 for Value of *
✓ = Options available

DIMENSIONS

All Dimensions are in mm



11

