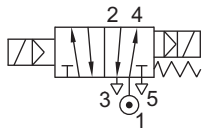
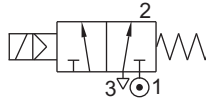


## SOLENOID VALVE FOR SUGAR INDUSTRY

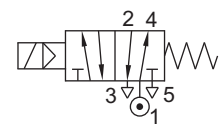
TYPE	PRESSURE
57400	2 - 10 bar



TYPE	PRESSURE
3013	2 - 10 bar



TYPE	PRESSURE
3012	2 - 10 bar



### FEATURES

- Bubble tight shut off
- Mounts in any position
- Vibration resistance up to 9g
- Suitable for high speed cycling
- Speed up to 600 cycles/ min
- Life >10 million cycles



### WETTED PARTS

Body	Anodized Aluminium	Plunger, Insert	SS 430
Internals	Aluminium, Brass and SS 316	Spring	SS 302
Guide Assembly	SS 304	Seat, Seals	NBR
Shadow-Ring	Copper	Fastener	SS 304

### OPTION

Body Material	-
Orifice	-
Connection	
Media	-
Seal	-
Voltage	Any
Current	Any
Enclosure	-
Solenoid Size	14
Extended Application	-

### SPECIFICATION

Valve Type	5/2 Internal Pilot Operated/ 3/2 Internal Pilot Operated NC
Body Material	Aluminium
Orifice	6
Port Connection	1/4" BSP(F)
Media	Air
Pressure	2 - 10 bar
Seal	NBR, Viton
Coil Voltage, Current	220V, 50Hz
Enclosure	Weather Proof Flying Lead IP67
Application	-
Model	-

### AMBIENT TEMPERATURE

-30°C to 75°C

### FLUID TEMPERATURE

-30°C to 75°C

SPARES	CODE
Seal Kit Orings and Plunger	98
Repair Kit, Orings, Plunger, Fasteners, Spring, Manual actuator Guide Assembly	99
Solenoid Kit	34

Contact Rotex for any other ambient, fluid temperature, media and application.

