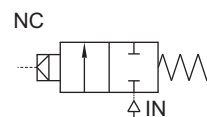


40/ 50 NB REMOTE PILOT DOUBLE DIAPHRAGM PULSE JET VALVE

TYPE	PRESSURE

TYPE	PRESSURE

TYPE	PRESSURE
26106	0.5 - 8.5 bar



FEATURES

- Pulse jet valve with double Diaphragm for remote operation with fast ON and OFF response
- Select valve type 20159 to operate the valve Refer page 369 to 372

WETTED PARTS

Code	※	B5
Body and Internals	Aluminium Die Cast	SS 316 Cast
Diaphragm	Hytrel, Viton	
Fasteners	SS 304	
Seat, Seals	NBR, Viton	



SPECIFICATION

FLOW FACTOR

RESPONSE TIME DEPENDS ON PILOT VALVE ORIFICE AND PIPE LENGTH BETWEEN PILOT AND VALVE

AMBIENT TEMPERATURE

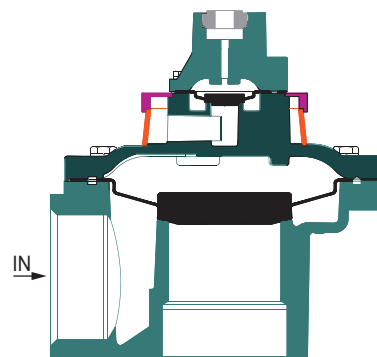
-5 °C to 85 °C

FLUID TEMPERATURE

-5 °C to 85 °C

PORT CONNECTION

INLET	OUTLET	PILOT
2	1	3



SPARES (Refer page 25 for ordering code)

SPARE KIT	CODE
Diaphragm Kit : Diaphragm Kit	100
Seal Kit : Oring Set, Diaphragm Kit	98
Repair Kit : Oring Set, Diaphragm Kit, Fastener	99

Contact Rotex for
• Any other ambient, fluid temperature, media and application



Use 2/2 NC PILOT Type 20159, 3.5 mm orifice for operating this valve.

40/ 50 NB REMOTE PILOT DOUBLE DIAPHRAGM PULSE JET VALVE

SPECIFICATION

PORT CONNECTION		PRE-SSURE bar		ORIFICE (mm)	FLOW FACTOR kv (LPM OF WATER @ 1 bar ΔP)	VALVE TYPE	PILOT PRESSURE	BODY MATERIAL AND INTERNALS					SEALS					MANUAL OVERRIDE		SOLENOID ENCLOSURE		SUFFIX		POWER VA		CONSTRUCTION REFERENCE NUMBER					
SIZE	BSP(F) NPT(F)	MINIMUM	MAXIMUM					ALUMINIUM	ALUMINIUM + SS	BRASS (STD. PORT NPT)	SS 316/CF8 (STD. PORT NPT)	NBR	Viton	EPDM	HYTREL	PTFE	NIL	STAYPUT CUM MOMENTARY	MOMENTARY	FLYING LEAD	PLUG IN, IP67	SQ. PLUG IN, IP67	TERMINAL BOX IP67	FPJIB Ex d IIC, T4 OR T6, IP67	LARGE ENCLOSURE		SOLENOID SIZE	OXYGEN	AMONIA	AC INRUSH	AC HOLDING
REMOTE PILOT																															
11/2"	12G 12R	0.5	8.5	52	1100	26106		*					S0	S2	*																P19
		0.5	8.5	52	1100	26106A		*		B12	S0	S2	*																		P19
2"	16G 16R	0.5	8.5	52	1300	26106		*		B12	S0	S2	*																		P19
		0.5	8.5	65	1800	26106		*			S0	S2	*																		P19
21/2"	20G 20R	0.5	8.5	65	2000	26106		*			S0	S2	*																		P19

ORDERING CODE, EXAMPLE

VALVE

※ = Do not specify when opted for. Refer Page # 22 for Value of ※

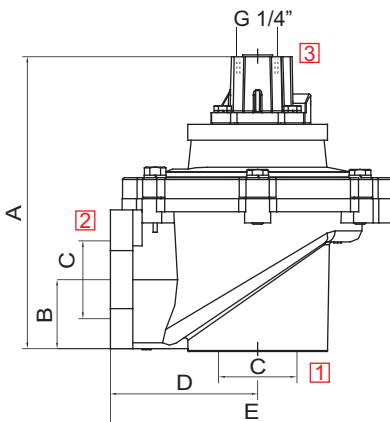
TYPE - ORIFICE - PORT CONNECTION - BODY AND INTERNALS - SEAL

e.g. 26106-52-16G.

DIMENSIONS

All Dimensions are in mm

CONSTRUCTION REFERENCE P19



VALVE TYPE	NW	PIPE CONN.	A	B	C	D	E
24106	52	11/2"	138	38.5	11/2"	79	151.5
24106	52	2"	138	38.5	2"	79	151.5
24106A	52	11/2"	153	32.5	11/2"	72	144.5
24106	65	2"	159	45	2"	96	180
24106	65	21/2"	159	45	21/2"	96	180