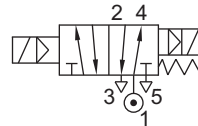


**SERIES : 32P**

**5/2 PILOT OPERATED, SINGLE/ DOUBLE SOLENOID, SUBBASE MOUNTED VALVE**

TYPE	PRESSURE	TYPE	PRESSURE
		57400	2 - 10 bar



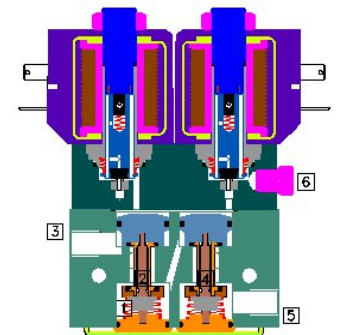
**FEATURES**

- Bubble tight shut off
- Mounts in any position
- Vibration resistance up to 9g
- Suitable for high speed cycling
- Speed up to 1000 cycles/ min for 51400 others 500 cycles/ min
- Life >10 million cycles
- O Rings and fasteners supplied loose with the valve



**WETTED PARTS**

Code	※	B1	B5
Body	Anodized Aluminium	Anodized Aluminium	SS 316
Internals	Aluminium, Brass and SS 316	SS 316	SS 316
Guide Assembly	SS 304		
Shadow-Ring	Copper/ Silver/ None		
Plunger, Insert	SS 430		
Spring/ Circlip	SS 302/ Steel		
Fasteners	SS 304		
Seat, Seals	NBR, Viton, F. Silicon		



※ Do not specify code if opted for. Refer Page # 22 for Value of ※

**AMBIENT AND FLUID TEMPERATURE**

-30 °C to 75 °C

**SPECIAL VERSION AND SUFFIX**

Suffix :(Valve) OX, AM  
Special version : (Solenoid) CO, FR, SS, LC, III

**MEDIA**

Air, Inert Gases

**APPLICATION**

Operation of double acting cylinder/ actuator

**PORT CONNECTION**

INLET	OUTLET	OUTLET	EXHAUST	EXHAUST	PILOT EXHAUST
1	2	4	3	5	6

Contact Rotex for

- Any other ambient, fluid temperature, media and application
- UL listed, Listed general purpose Valve
- Media like Water, Light Oil etc.

**SPARES**

(Refer page 25 for ordering code)

SPARE KIT	CODE
Seal Kit : Oring Set and Plunger Assembly	98
Repair Kit : Oring Set, Plunger Assembly, Fastener, Springs, Manual Override, Guide Assembly, Piston Kit	99
Solenoid Kit : Solenoid, Gasket and Nut	34

**APPROVAL**

(★ applied for)

Approval	TYPE 4X, 6P	IP67	Ex d IIC T4 or T5 or T6 IP66	Ex ia IIC T6 IP67	DGMS	CCOE
		✓	✓	✓	✓	✓
CE		✓	✓	✓		
UL	✓		*			
			✓	✓		
ERC			✓	✓		
			✓	✓		



The pressure drop at inlet port causes malfunction of the Valve. All equipment connected the header and the inlet port should have a higher orifice compared to the solenoid Valve.  
Select Manifold MF003/ MF004/ MF010/ MF013  
Electrical failure Stayput, Air failure to reset. Applicable for 57424.



