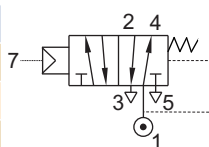


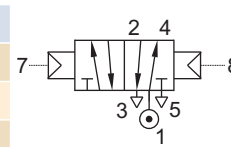
5/2 AIR OPERATED, SPRING/ AIR RETURN, SUBBASE MOUNTED VALVE

TYPE	PRESSURE

TYPE	PRESSURE
53445	0 - 16 bar



TYPE	PRESSURE
58445	0 - 16 bar



FEATURES

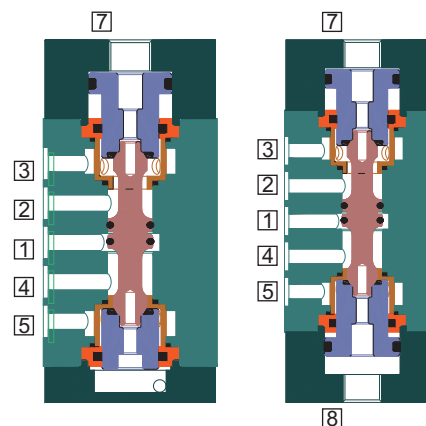
- Highly reliable rugged construction
- Positive Sealing and snap operation with poppet design
- Bubble tight shut off
- Vibration resistance up to 9g
- Suitable for high speed cycling
- Orifice up to 25mm, higher orifice available on request
- Life >10 million cycles
- Speed up to 1000 cycles/ min
- Larger exhaust for quick operation of the cylinder/ actuator
- Mounts in any position
- O Rings and fasteners supplied loose with the Valve



WETTED PARTS

Code	※	B1	B5
Body	Anodized Aluminium	Anodized Aluminium	SS 316
Internals	Aluminium, Brass and SS 316	SS 316	SS 316
Spring/ Circlip	SS 302		
Fasteners	SS 304		
Seat, Seals	NBR, Viton, F. Silicon		

※ Do not specify code if opted for. Refer Page # 22 for Value of ※



AMBIENT AND FLUID TEMPERATURE

-30 °C to 75 °C

SPECIAL VERSION AND SUFFIX

Suffix : (Valve) AM

MEDIA

Air, Inert Gases, Oil, Water

PORT CONNECTION

INLET	OUTLET	OUTLET	EXHAUST	EXHAUST	EXTERNAL PILOT INLET	VALVE TYPE
1	2	4	3	5	7	53445
1	2	4	3	5	7 and 8	58445

Contact Rotex for

- Any other ambient, fluid temperature, media and application
- UL listed, Listed general purpose Valve



The air pressure should be minimum 2 bar or ≥ main fluid pressure whichever is higher. Select Manifold MF008
OIL Media Temperature Restricted from 0 °C to 100 °C

SPARES

(Refer page 25 for ordering code)

SPARE KIT	CODE
Seal Kit : Oring Set	98
Repair Kit : Oring Set, Fastener, Springs	99



5/2 AIR OPERATED, SPRING/ AIR RETURN, SUBBASE MOUNTED VALVE

SPECIFICATION

SIZE	PORT CONNECTION		PRE-SSURE bar		ORIFICE (mm)	FLOW FACTOR kv (LPM OF WATER @ 1 bar ΔP)	VALVE TYPE	PILOT PRESSURE	BODY MATERIAL AND INTERNALS						SEALS						MANUAL OVERRIDE		SOLENOID ENCLOSURE				SUFFIX		POWER VA		CONSTRUCTION REFERENCE NUMBER	
	BSP(F)	NPT(F)	MINIMUM	MAXIMUM					ALUMINIUM	ALUMINIUM + SS	BRASS	SS 316	NBR	Viton	EPDM	HYTREL	F. Silicon	NIL	STAYPUT CUM MOMENTARY	MOMENTARY	FLYING LEAD	PLUG IN, IP67	SQ. PLUG IN, IP67	TERMINAL BOX IP67	Ex d IIC, T4 OR T6, IP67	LARGE ENCLOSURE	SOLENOID SIZE	OXYGEN	AMONIA	AC INRUSH		AC HOLDING
5/2 AIR OPERATED SPRING RETURN																																
SB	0	16	6	14	53445A	2-16	×		B5	×	S2																				738	
	0	16	12	50	53445	2-16	×		B5	×	S2																				739	
	0	16	25	100	53445	2-16	×		B5	×	S2																					740
5/2 AIR OPERATED AIR RETURN																																
SB	0	16	6	14	58445A	2-16	×		B5	×	S2																				741	
	0	16	12	50	58445	2-16	×		B5	×	S2																					742
	0	16	25	100	58445	2-16	×		B5	×	S2																					

× = Do not specify when opted for. Refer Page # 22 for Value of ×
 ✓ = Options available

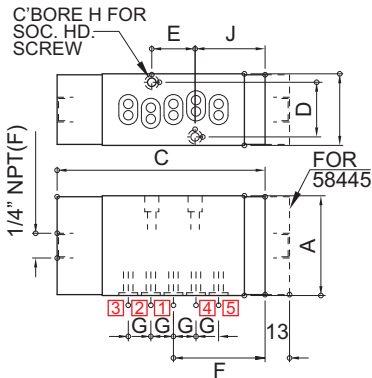
* Valve type printed in red colour is external pilot air/ air operated valve

ORDERING CODE AND EXAMPLE VALVE

VALVE TYPE – SUFFIX – ORIFICE – PORT CONNECTION – BODY AND INTERNALS – SEAL - MEDIA
 e.g. 58445-6-SB

DIMENSIONS

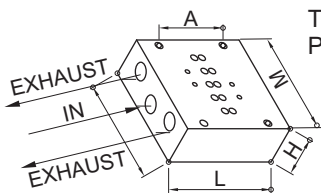
All Dimensions are in mm



K (PORT SIZE)	A	B	C	D	E	F	G	H	J	CONST. REF.	C	CONST. REF.	
VALVE TYPE : 53445												58445	
SUBBASE	53	38	111	29	49	49	12	M4	37	738	124	741	
SUBBASE	75	45	144	36	66	66	18	M5	54.5	739	157	742	
SUBBASE	110	65	193	80	92	92	28	M8	80.5	740	206	743	

ADOPTER PLATE

Adopter plate is used for mounting 1 No. 53445/ 58445 valve.
 This has individual inlet and outlets.
 Pilot connection can be provided on the adopter plate



CODE	BSP	DESCRIPTION
AP5A	1/4" BSP	53445/58445
AP5D	3/8" BSP	53445/58445
AP5B	1/2" BSP	53445/58445
AP5E	3/4" BSP	53445/58445
AP5C	1" BSP	53445/58445

CODE	NPT	DESCRIPTION
AP5F	1/4" NPT	53445/58445
AP5G	3/8" NPT	53445/58445
AP5H	1/2" NPT	53445/58445
AP5g	3/4" NPT	53445/58445
AP5K	1" NPT	53445/58445

